

## Safety instructions

Important! Before commencing installation work disconnect the main cable from the power supply - remove fuse or turn switch to "OFF"!

1. Installation should be carried out in accordance with the local safety regulations.
2. In order to prevent damage, please check walls for cables before drilling holes.
3. Please ensure that all electrical connections (even preassembled lamps) are screwed tightly or are fully inserted as good contact is essential for a long life-span at high currents. Please check for tight connections after changing or adjusting lamps. Screwed connections must be tightened after 20 minutes.
4. Please do not place objects on your system (e.g. for decorative purposes) if they were not delivered with the system.
5. The lamps get very hot when in use. Please allow lamps to cool down before touching.
6. Do not change lamps or spots when switched on.
7. System should not be enlarged with additional lamps.
8. Use of a dimmer is highly recommended. Dimmer must be compatible with type of light source.
9. To avoid greasy fingerprints it is recommended to wear white cotton gloves when handling visible metal and glass parts.
10. If the external flexible cable or cord of this luminaire is damaged, it shall be exclusively replaced by the manufacturer or his service agent or a similar qualified person in order to avoid a hazard.
11. We reserve the right to make technical alterations.

Please keep these instructions.

Light source: Replaceable LED-module (1990020)

2024-07-01 EU



NUURA

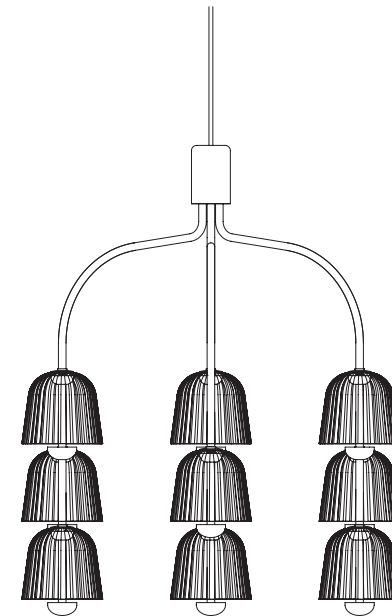
[www.nuura.com](http://www.nuura.com)  
[info@nuura.com](mailto:info@nuura.com)

© 2025 All rights reserved



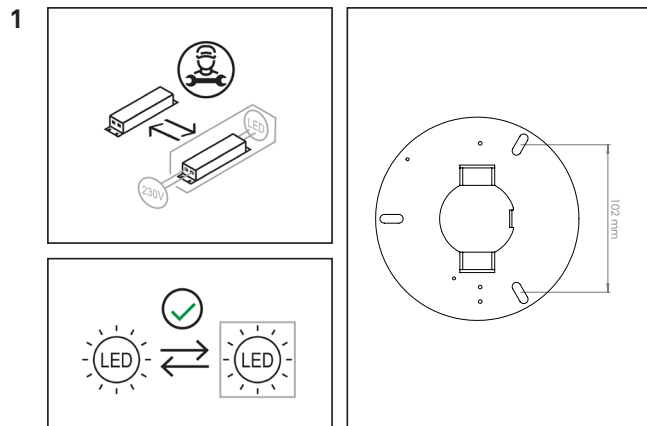
# Asteea 9

## Assembly Instructions



NUURA

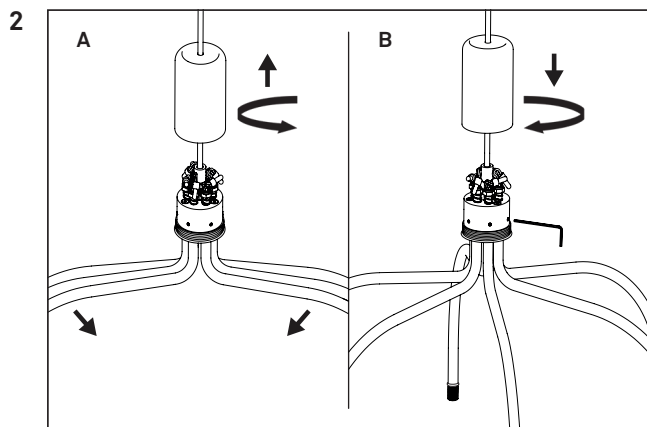
© 2025 All rights reserved



The driver must be replaced by a professional.

The LED-module is replaceable by the end-user. Instructions at [www.nuura.com](http://www.nuura.com).

Mounting hole dimensions.

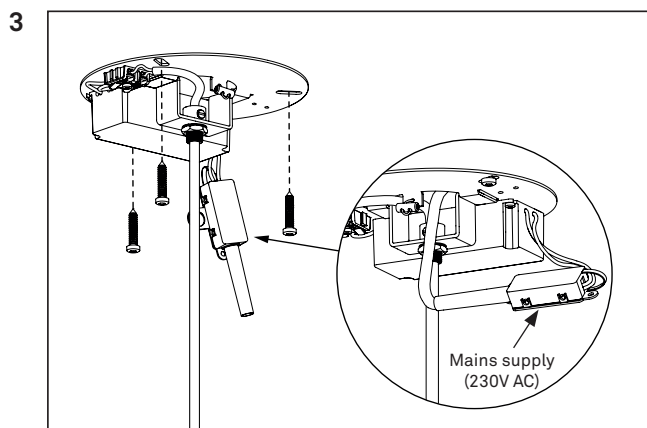


**A:** Unscrew and remove the cover carefully.

Rotate and pull out the lamp's 6 arms evenly.

**B:** Adjust the arm positioning. Lock in place by tightening the set screws in the lamp base

Place the cover back on the base and screw it on tightly.

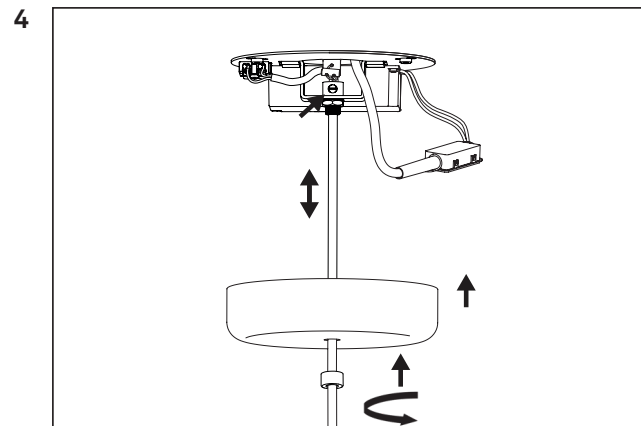


Mount the bracket to the ceiling with screws.

Make sure to use appropriate rawlplugs/anchors for your construction. (Screws and rawlplugs are not included.)

**CAUTION:** Connecting mains supply 230V AC directly to the pendant will damage the LED-module.

Use the cable terminal inside the enclosed terminal box to connect mains power to the input side of the driver.

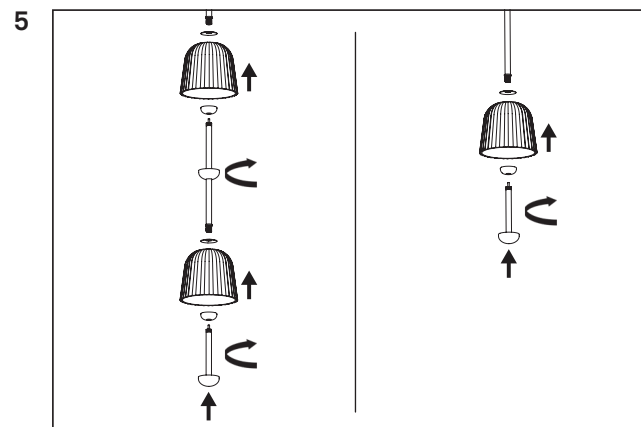


Adjust the height of the pendant by releasing the strain relief and lead the suspension cable through. Retighten the strain relief to secure the height.

Shorten the cable if necessary and reconnect the suspension cable to the cable terminal. Make sure the polarity is correct lamp will not work otherwise.

Lead the canopy cover to the ceiling.

Secure the cover by hand tightening the fastener.

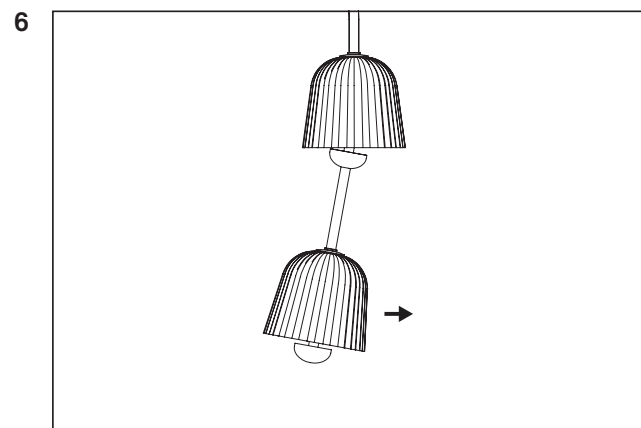


Lead the curved washer through the thread.

Carefully place the lampshade underneath the curved washer.

Place the reflector under the lampshade. Fix it by turning the reflector clockwise.

Place the tube under the reflector and fix it by turning the tube clockwise.



Make sure all connections are properly tightened to secure the arms hang straight.

Final adjustments can be done by gently pulling the tubes.